

This fitting instruction document covers suitability for all Vier 1 and 3 star security cylinders in keyed to differ, master keyed or keyed alike variants.

CAUTION:

- Extreme care should be taken when preparing doors for hardware installation and lock cases / striking plates must be ensured to be correctly square and aligned in the door. Furthermore, any cylinder escutcheons must be correctly fitted before any cylinder is fitted as any mis-alignment of either the lock case or escutcheons will make installation of the cylinder difficult.

- Do not attempt to force any security cylinder (in particular the 3-star model) under any circumstances as this will damage or snap the cylinder to stop it from functioning correctly.

- The Vier 1 star cylinder is designed and tested to the requirements of TS007: 2014 + A1: 2018 to give resistance against many common forms of attack and must be used in conjunction with a lever handle set with reinforced security backplate or a security escutcheon which would also be tested in accordance with TS007 under a 2 star rating. This would give a total of 3 stars when used in conjunction with a 1 star security cylinder.

- The Vier 3 star cylinder is designed and tested to the requirements of TS007: 2014 + A1: 2018 to give resistance against the most commonly used forms of attack and has a snap feature which will render the cylinder inoperable in the event of the cylinder snapping. Therefore it is critically important that extreme care is taken with fitting these cylinders as any excessive force applied either during or after installation in the door could result in the snap feature activating.

PRE-INSTALLATION:

Vier 3 Star cylinders are supplied with numerous security features which should be checked PRIOR to the cylinder being installed.

1. Check the cylinder body is not snapped, bent or mis-aligned.
2. Insert key and rotate fully to operate the CAM - complete three full rotations, on a double cylinder repeat for both sides on a cylinder & turn repeat rotation on the turn side prior to installation.

INSTALLATION:

Please refer to the attached installation instruction diagram to aid in fitting the product

DO NOT APPLY FORCE TO THE CYLINDER BODY OR KEY BOW AT ANY STAGE DURING ANY ALIGNMENT CHECKING PROCESS

OPERATION:

Always ensure Key is inserted fully into the cylinder before attempting to rotate key.

If resistance is felt in operation remove and re insert key - do not use excessive force to rotate key as this could cause damage to the Key or the cylinder / lock.

NOTE:

Zoo Hardware record the cutting depths and details of all keys when produced in our cylinder centre.

This secure data base works with our key cutting machines to accurately cut keys to code.

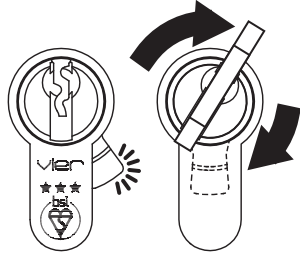
A key that is not in tolerance with the correct cut depths & spaces can create issues in operation and in some instances render the cylinder inoperable. A correctly cut key that is cut to code will prevent this

MAINTENANCE:

Inspect and review operation of the cylinder and the locks at least every three months to ensure all items are working correctly, ensure all fixings are secure.

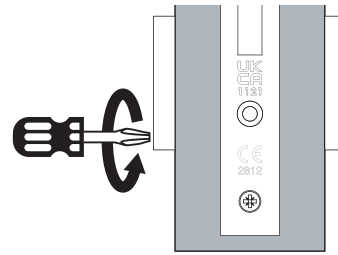
Should any lubrication be required for the cylinder - please ensure to only use specific lock / cylinder lubricant, do not use proprietary oils, greases or water displacement sprays.

1.



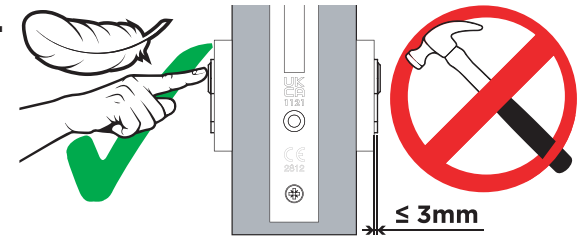
Rotate key to align cam with cylinder body to allow installation

2.



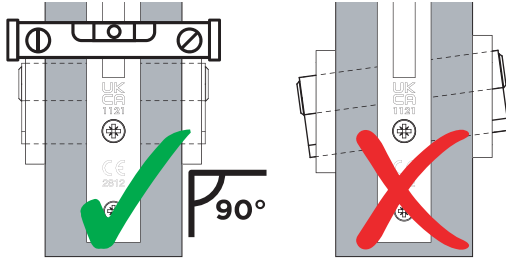
Remove / loosen door hardware to allow cylinder to fit into the door / lock

3.



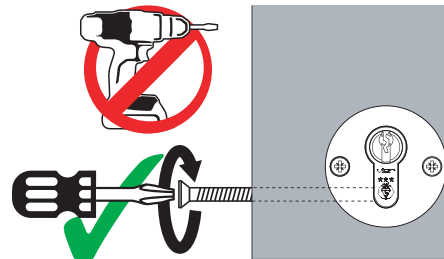
Insert the cylinder into the door. **NEVER** force cylinder into place. Excessive force will damage the product & invalidate the warranty.
 Note: Max. projection from hardware = 3mm

4.



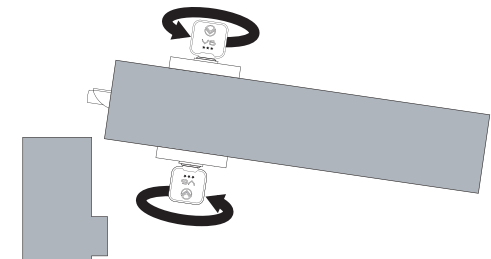
Lock installation must be horizontal with the door and the cylinder must be at 90° to the door

5.



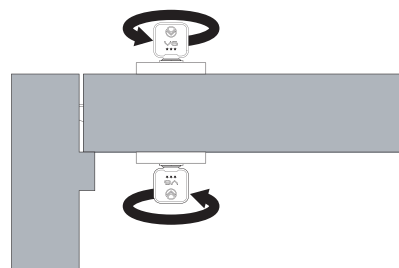
Once the cylinder is in place, re-install / tighten door hardware and fit retaining screw. **NEVER** use power tools to install retaining screw

6.



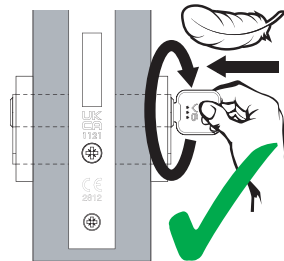
With door open, operate cylinder from both sides to ensure smooth operation. **NEVER** use the key as a handle to open or close the door

7.

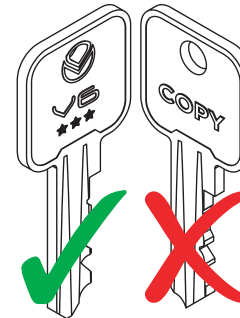


Repeat process with door closed ensuring deadbolt engages correctly with the keep. Adjust if necessary.

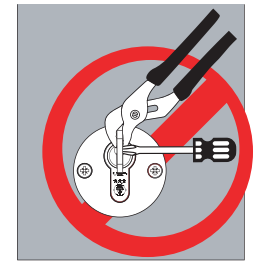
Operation Warnings



Ensure key is inserted fully before attempting to rotate key



Always obtain official Vier keys that are cut from code. Please do not use 3rd party copy keys or traced keys



NEVER use additional tools or objects to create extra torque to rotate the key