

Tools Required:

- | | | |
|--|--|-----------|
| 1. Drill with bits for morticing of Timber | 2. Chisel | 3. Mallet |
| 4. Pencil | 5. Screwdriver with No 1 or 2 Pozidriv bit | 6. Ruler |

Fitting:

Step 1.

Whilst holding the door open, position the lock centrally along the leading edge of the door and using a pencil mark out the mortice position. Make sure that the position of the mortice avoids cutting through any joints of the door construction. Cut a rectangular slot for the lock case in accordance with the lock body width suitable to ensure a secure fit, ideally 15mm wide and to suit chosen backset. **(NOTE: If fitting to a fire door please allow an additional 1mm depth on the case depth and either side of the case width for fitting intumescent seal - 1mm for a 30-minute fire door or 2mm for a 60 minute fire door).**

Step 2.

Insert the lock body into the rectangular slot, ensuring the forend is pushed firmly to the face of the door, using a pencil mark around the forend. Remove wood to the max depth of 3mm, this depth allows the flush fitting of the lock to the face of the door. Once done, mark out then drill pilot holes for the 2 screws in the forend. **(NOTE: If fitting to a fire door please allow an additional 1mm depth to the forend mortice for fitting intumescent seal - 1mm for a 30-minute fire door or 2mm for a 60 minute fire door).**

Step 3.

Using the lock body as a template, mark on the side of the door the positions of the spindle and the cylinder hole centres. Please note hole centres requiring to be cut will vary according to the lock model being installed. **(NOTE - Cylinder hole preparation not required for ZDL0055L/ZDL0060L latch or ZDL7855/ZDL7860 bathroom models)**

Step 4.

Remove lock from the door and drill 20mm diameter holes through the door from both sides into the mortice (care must be taken to ensure holes are level to ensure correct fitting of handle furniture). Remove enough material on hole position for euro cylinder to allow cylinder body to pass through. If, depending on the handing of the door, the latch bolt needs reversing, follow latch bolt reversal procedures attached with document. **(NOTE - Cylinder hole preparation not required for ZDL0055L/ZDL0060L latch or ZDL7855/ZDL7860 bathroom models)**

Step 5.

Place the lock back into the door ensuring that everything lines up. At this point line up and install any chosen door furniture to suit the lock, to both sides of the door. With all items prepared and installed, fit two fixing screws to lock forend to secure in place.

Step 6.

With the door open, ensure that the deadbolt is in the thrown position (extended) so both bolts protrude from the leading edge of the door. At this point close the door gently against the door frame and using a pencil mark the positions for the latch bolt and the dead bolt onto the door frame. **(NOTE - Latchbolt marking not required for ZDL0055/ZDL0060 deadlock model)**

Step 7.

Mark out on the door frame the length of the strike plate with the fixing holes and go through the same procedure of marking out the recess for the strike plate and dust box. Then remove enough wood to ensure installation of the plastic dust box and chisel a 1.5mm recess for the strike plate to sit flush to the door. **(NOTE: If fitting to a fire door please allow an additional 1mm depth to the strike plate recess for fitting intumescent seal - 1mm for a 30-minute fire door or 2mm for a 60 minute fire door).**

Step 8.

Fit the dust box and strike plate using screws provided. Ensure the bolts fit well and can be fully thrown into the strike plate and where applicable adjust the anti rattle tabs.

Step 9.

Apply final furnishings and check all operations prior to finishing.

Important Information for Fire Door Fitting:

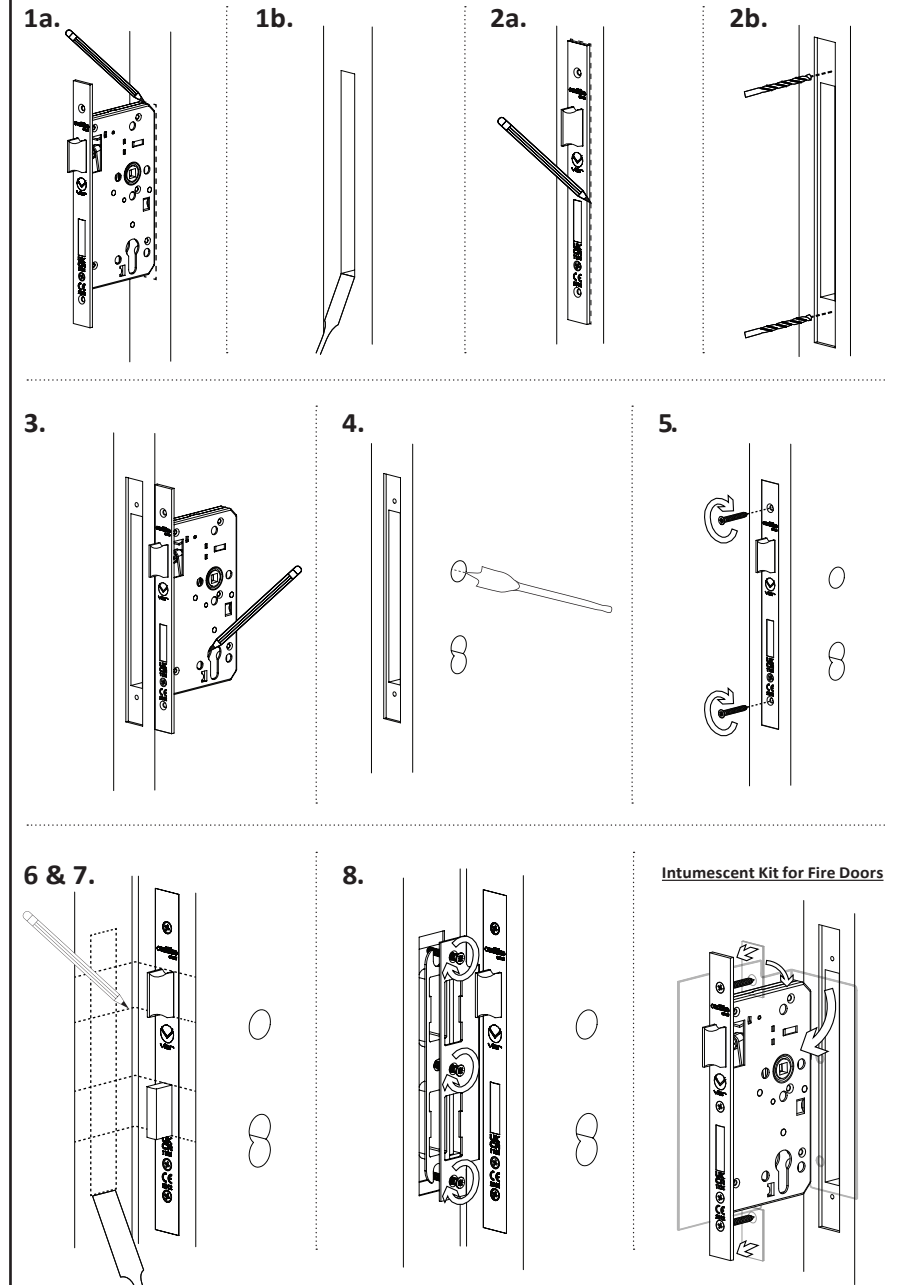
This product has been fire tested in combination with a specific intumescent kit/material to the requirements of BSEN1634-1. This intumescent kit is critical to the product's fire test evidence and UKCA / CE / Certifire certification. Failure to supply / fit the exact material and similar design of kit will invalidate all fire test evidence and certification and Zoo Hardware accept no responsibility or liability for incorrectly specified/fitted intumescent material.

Dangerous Substances:

The materials used in this device do not contain or release any dangerous substances in excess of the maximum levels specified in existing European material standards or any national regulations.

CPR Declaration of Performance:

To download CPR Declaration of Performance, please visit www.zoohardware.co.uk/knowledge-bank





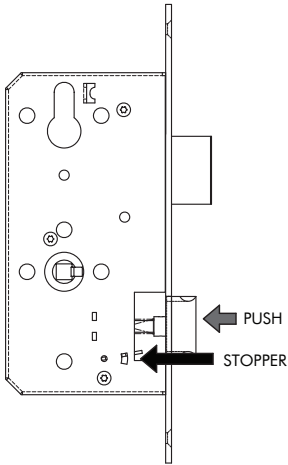
ZDL Series Architectural DIN Locks
Latch Bolt Reversal Instructions

ZDL7255/ZDL7260
ZDL0055L/ZDL0060L
ZDL7255NL/ZDL7260NL
ZDL7855/ZDL7860

Reversing the Latch Bolt:

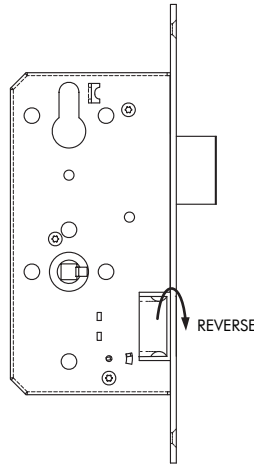
STEP 01

Hold lock upside down, the stopper will drop into the case. Push latch bolt as indicated until clear of the forend.



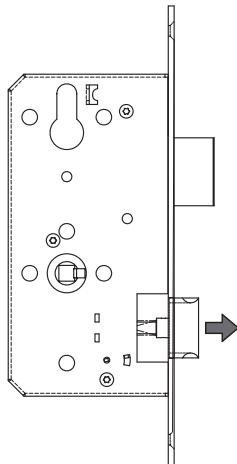
STEP 02

With the latch bolt pushed into the case, rotate the latch bolt through 180 degrees to reverse.



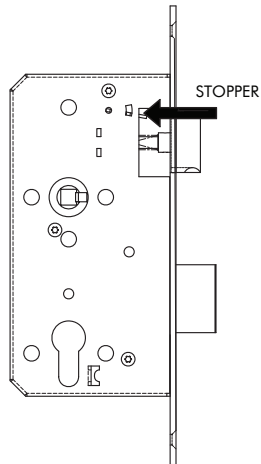
STEP 03

Once rotated the latch bolt should pass through the lock forend as shown.



STEP 04

With the lock case the right way up, check the stopper has dropped clear of the lock case. Reversal complete.



1121-UK-CPR-AG7883	2812-CPR-AG5154	APPROVED CF850	
ZDL7255/ZDL7260	2021	2020	2021
BSEN12209: 2003	3	X	8 1* 0 G 2 B C 2 0

1121-UK-CPR-AG7883	2812-CPR-AG5155	APPROVED CF850	
ZDL0055/ZDL0060	2021	2020	2011
BSEN12209: 2003	3	X	8 1* 0 G 2 B C 0 0

1121-UK-CPR-AG7883	2812-CPR-AG5154	APPROVED CF850	
ZDL0055L/ZDL0060L	2021	2020	2021
BSEN12209: 2003	3	X	8 1* 0 G - B 0 2 0

1121-UK-CPR-AG7883	2812-CPR-AG5154	APPROVED CF850	
ZDL7855/ZDL7860	2021	2020	2021
BSEN12209: 2003	3	X	8 1* 0 G - B G 2 0

1121-UK-CPR-AG7883	2812-CPR-AG5154	APPROVED CF850	
ZDL7255NL/ZDL7260NL	2021	2020	2021
BSEN12209: 2003	3	X	8 1* 0 G 1 B 0 2 0