



NORTH EAST HORTICULTURAL SOCIETY ANNUAL SHOW

will be on

Saturday, 5th & Sunday, 6th September 2026

TO BE HELD AT



BEAMISH



THE LIVING MUSEUM OF THE NORTH

Opening times: 10am-5pm, Saturday, 5th & Sunday, 6th September 2026.

All exhibits to be benched between 1pm and 8pm on Friday, 4th September 2026.

Produce to be lifted from benches at 3pm on Sunday, 6th September 2026.



Vegetable Judge: A Read FNVS

Flower Judges: L McGough and M Robbie

Leek Judges: J Nick Ruddy (NPLS Rules), A Davison (CIU Rules) and
J Soulsby and J Keeler (Other Leeks)

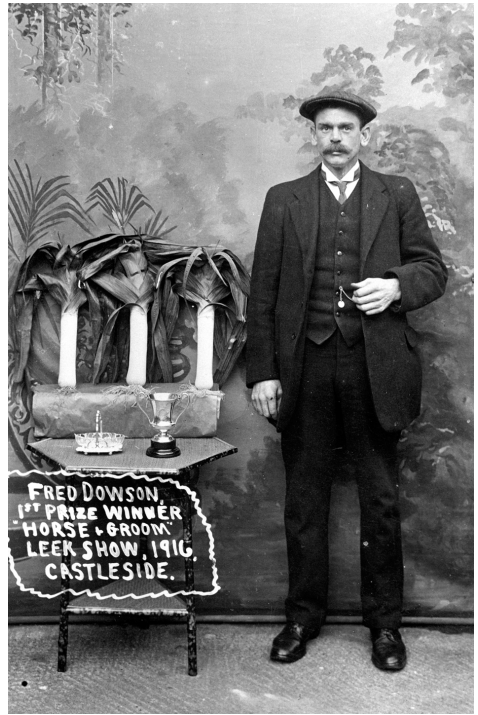
Show Secretary, Alison Keeler:

10 Tyne Avenue, Leadgate, Consett, County Durham, DH8 6HB. 07951158719

Museum entry is free to NEHS exhibitors throughout this event. Please contact your Show Secretary for full details.



Prizewinners, possibly of Durham Working Men's Club Leek Show, 26th September 1957.



Fred Dowson with three leeks which won him first prize in the Horse and Groom Leek Show, Castleside, 1916.



Leek show in pub at Edmondsley, 15th October 1959.



Mr F Taylor showing his prize leeks from Pittington Co-op Leek Show, 30th September 1955.



Flower Show, Durham Town Hall, October 1953.

Images from Beamish's collections.

Show Rules

- In the North East Horticultural Society Championships, entries are restricted to one per person per class.
- Entry fees to the North East Horticultural Championships are itemised on the entry form. Entry is free of charge for North East Horticultural Society members. Annual membership of the Society is £10. Membership from January 1st to December 31st.
- Entries will be accepted on the day of benching provided there is sufficient space available and at the discretion of the show secretary and stewards.
- Exhibitors will be able to access the venue between 1pm and 8pm (museum closes at 5pm) on Friday, 4th September 2026 in order to bench their entries. Once exhibitors have staged their entries they will not be moved other than by a show steward.
- The handling of exhibits, once judged, is strictly forbidden.
- All exhibits to be staged and judged in accordance with the guidelines set out by the National Pot Leek Society (NPLS), the Club and Institute Union (CIU), the National Vegetable Society, the National Chrysanthemum Society and the National Dahlia Society, apart from the Heaviest Vegetable Section, which will be judged under the Guinness World Record rules.
- All flower and vegetable varieties are to be named on the cards provided.
- The base of each onion staged must not be more than 150mm above the table.
- Only judges, show officials and stewards will be allowed in the show area during judging.
- No exhibit in any section will be lifted for any reason before the end of the show.
- The judges' decisions are final.
- These rules are to be viewed in conjunction with the show schedule.

Leek Section

CLASS 1: TWO POT LEEKS (NPLS rules)

6 inch maximum length to button.

1st Prize £250. 2nd Prize £175. 3rd Prize £125. 4th Prize £75. 5th Prize £60. 6th Prize £50. 7th Prize £40. 8th Prize £30. 9th Prize £20. 10th Prize £15. 11th to 20th Prize £10.

CLASS 2: TWO POT LEEKS (CIU rules)

1st Prize £250. 2nd Prize £175. 3rd Prize £125. 4th Prize £75. 5th Prize £60. 6th Prize £50. 7th Prize £40. 8th Prize £30. 9th Prize £20. 10th Prize £15. 11th to 20th Prize £10.

CLASS 3: TWO BLANCH LEEKS (NPLS rules)

14 inch minimum length to button.

1st Prize £70. 2nd Prize £50. 3rd Prize £30. 4th Prize £20. 5th to 10th Prize £10.

CLASS 4: TWO INTERMEDIATE LEEKS (NPLS rules)

Over 8 inch and up to 12 inch to button.

1st Prize £70. 2nd Prize £50. 3rd Prize £30. 4th Prize £20. 5th to 10th Prize £10.

CLASS 5: ONE POT LEEK, ONE INTERMEDIATE LEEK AND ONE BLANCH LEEK (NPLS rules)

All to regulation length.

1st Prize £70. 2nd Prize £50. 3rd Prize £30. 4th Prize £20. 5th to 10th Prize £10.

CLASS 6: ONE SUPER POT LEEK (NPLS rules)

7 inch maximum length to button.

1st Prize £25. 2nd Prize £20. 3rd Prize £15. 4th Prize £10. 5th to 10th Prize £5.

Vegetable Section

CLASS 7: A COLLECTION OF SIX KINDS OF VEGETABLE

Two of each kind. Tap root vegetable tops trimmed to 76mm approximately. Space allowed – 900mm frontage x 1200mm deep. To be staged flat. 1st Prize £40. 2nd Prize £25. 3rd Prize £20. 4th Prize £10. 5th Prize £5.

CLASS 8: MINI COLLECTION OF FIVE KINDS OF VEGETABLE

Four of each kind from the following: Potatoes, Stump Carrots, Beetroot, Peas, Tomatoes or Onions (250g). Tap root vegetable tops trimmed to 76mm approximately. Space allowed – 600mm frontage x 1200mm deep. To be staged flat. 1st Prize £30. 2nd Prize £20. 3rd Prize £10.

CLASS 9: A COLLECTION OF FOUR VARIETIES OF VEGETABLE

Three of each kind. Vegetables to be 15 points and under, as classified by the National Vegetable Society. Garlic, Kale, Kohlrabi, Lettuce, Marrow, Mushroom, Onions (250g or under, sets, salad or spring), Oriental Brassica, Peas (mangetout, petit pois or sugar snap), Pepper (chilli or sweet), Pumpkin, Radish or Rhubarb. Space allowed – 600mm frontage x 750mm deep. To be staged flat. 1st Prize £25. 2nd Prize £15. 3rd Prize £10.

CLASS 10: A COLLECTION OF FOUR KINDS OF VEGETABLES

One of each kind. Tap root vegetable tops trimmed to 76mm approximately. Space allowed – 900mm frontage x 1200mm deep. To be staged flat. 1st Prize £25. 2nd Prize £15. 3rd Prize £10.

CLASS 11: COLLECTION OF FOUR VEGETABLES

To fit on a 12 inch square board. Judged on presentation. 1st Prize £25. 2nd Prize £15. 3rd Prize £10.

CLASS 12: THREE LARGE DRESSED EXHIBITION ONIONS

Tied with natural raffia. Staging allowed. 1st Prize £30. 2nd Prize £20. 3rd Prize £10.

CLASS 13: THREE DRESSED ONIONS

Over 1kg – Under 1.5kg. Tied with natural raffia. Staging allowed. 1st Prize £20. 2nd Prize £15. 3rd Prize £10.

CLASS 14: FIVE DRESSED ONIONS – Under 250g

1st Prize £20. 2nd Prize £15. 3rd Prize £10.

CLASS 15: ONION CHAMPIONSHIPS – FIVE LARGE DRESSED EXHIBITION ONIONS

Tied with natural raffia. Staging allowed.

1st Prize £50. 2nd Prize £30. 3rd Prize £20.

CLASS 16: ALLIUM (ONION)

1 Large. 1 250gm. 1 Shallot

1st Prize £15. 2nd Prize £10. 3rd Prize £5.



CLASS 17: THREE LONG CARROTS

Tops trimmed to 76mm approximately.

1st Prize £20. 2nd Prize £15. 3rd Prize £10.

CLASS 18: THREE STUMP ROOTED CARROTS

Tops trimmed to 76mm approximately.

1st Prize £20. 2nd Prize £15. 3rd Prize £10.

CLASS 19: THREE LONG PARSNIPS

Tops trimmed to 76mm approximately.

1st Prize £20. 2nd Prize £15. 3rd Prize £10.

CLASS 20: THE BRITISH POTATO CHAMPIONSHIPS

One dish of five white potatoes.

1st Prize £20. 2nd Prize £15. 3rd Prize £10.

CLASS 21: NINE TOMATOES

1st Prize £15. 2nd Prize £10. 3rd Prize £5.

CLASS 22: 12 SMALL FRUIT TOMATOES

1st Prize £15. 2nd Prize £10. 3rd Prize £5.

CLASS 23: TWO CAULIFLOWERS

With a minimum of 76mm stalk and leaves trimmed.

1st Prize £15. 2nd Prize £10. 3rd Prize £5.

CLASS 24: BEETROOT

Globe, one dish of three. Tops trimmed to 76mm approximately.

1st Prize £15. 2nd Prize £10. 3rd Prize £5.

CLASS 25: THREE LONG BEETROOT

1st Prize £15. 2nd Prize £10. 3rd Prize £5.

CLASS 26: DISH OF SIX PEAS

1st Prize £15. 2nd Prize £10. 3rd Prize £5.

CLASS 27: DISH OF SHALLOTS

Large Exhibition, dish of 12.

1st Prize £15. 2nd Prize £10. 3rd Prize £5.

CLASS 28: TWO CUCUMBERS

1st Prize £15. 2nd Prize £10. 3rd Prize £5.

CLASS 29: TWO CELERY

1st Prize £15. 2nd Prize £10. 3rd Prize. £5

CLASS 30: 6 FRENCH BEANS

1st Prize £15. 2nd Prize £10. 3rd Prize £5.

CLASS 31: 4 PEPPERS OR CHILLIES

1st Prize £15. 2nd Prize £10. 3rd Prize £5.

CLASS 32: HEAVIEST ONION: ROOTS & TOPS INTACT

1st Prize £150. 2nd Prize £50. 3rd Prize £30. 4th Prize £20. 5th Prize £10. Sponsor: Beveridge Nurseries.

CLASS 33: HEAVIEST LEEK

1st Prize £40. 2nd Prize £20. 3rd Prize £15. 4th Prize £10. 5th Prize £5
Sponsor: Leadgate CIU Club.

CLASS 34: HEAVIEST MARROW

1st Prize £40. 2nd Prize £20. 3rd Prize £15. 4th Prize £10. 5th Prize £5

CLASS 35: HEAVIEST CABBAGE

Shown with washed root.

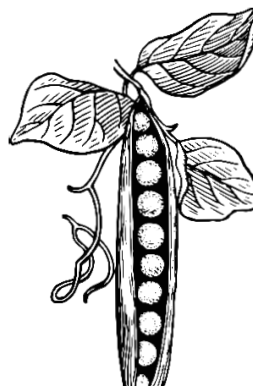
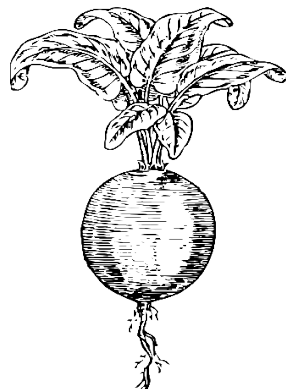
1st Prize £20. 2nd Prize £15. 3rd Prize £10.

CLASS 36: HEAVIEST TOMATO

1st Prize £20. 2nd Prize £15. 3rd Prize £10

CLASS 37: LONGEST CUCUMBER

1st Prize £20. 2nd Prize £15. 3rd Prize £10



FLORAL SECTION

EXHIBITORS ARE TO PROVIDE OWN VASES

CLASS 38: ONE TRUG OF FRUIT FLOWERS & VEGETABLES

1st Prize £40. 2nd Prize £30. 3rd Prize £20. 4th Prize £10. 5th Prize £5.

CLASS 39: ONE FLOWER. ONE VEG.

1st Prize £15. 2nd Prize £10. 3rd Prize £5.

CLASS 40: ONE VASE OF GLADIOLI. THREE STEMS

1st Prize £15. 2nd Prize £10. 3rd Prize £5.

CLASS 41: ONE VASE OF ONE STEM GLADIOLI

1st Prize £15. 2nd Prize £10. 3rd Prize £5.

CLASS 42: ONE VASE OF DAHLIAS

Three blooms per vase. No less than three cultivars.

1st Prize £15. 2nd Prize £10. 3rd Prize £5.

CLASS 43: ONE VASE OF GIANT DAHLIAS

Three blooms per vase. Can be shown in separate vases.

1st Prize £15. 2nd Prize £10. 3rd Prize £5.

CLASS 44: ONE VASE OF DECORATIVE DAHLIAS, LARGE

Three blooms per vase.

1st Prize £15. 2nd Prize £10. 3rd Prize £5.

CLASS 45: ONE VASE OF DECORATIVE DAHLIAS, MEDIUM

Three blooms per vase.

1st Prize £15. 2nd Prize £10. 3rd Prize £5.

CLASS 46: ONE VASE OF DECORATIVE DAHLIAS, SMALL

Three blooms per vase.

1st Prize £15. 2nd Prize £10. 3rd Prize £5.



CLASS 47: ONE VASE OF SMALL BALL DAHLIAS

Three blooms per vase.

1st Prize £15. 2nd Prize £10. 3rd Prize £5.

CLASS 48: ONE VASE OF DECORATIVE SMALL DAHLIAS

Three blooms per vase.

1st Prize £15. 2nd Prize £10. 3rd Prize £5.

CLASS 49: ONE VASE OF THREE MINIATURE DECORATIVE DAHLIAS

1st Prize £15. 2nd Prize £10. 3rd Prize £5.

CLASS 50: ONE VASE OF THREE MINIATURE BALL DAHLIAS

1st Prize £15. 2nd Prize £10. 3rd Prize £5.

CLASS 51: ONE VASE OF CACTUS/SEMI-CACTUS DAHLIAS, LARGE

Three blooms per vase.

1st Prize £15. 2nd Prize £10. 3rd Prize £5.

CLASS 52: ONE VASE OF CACTUS/SEMI-CACTUS DAHLIAS, MEDIUM

Three blooms per vase.

1st Prize £15. 2nd Prize £10. 3rd Prize £5.

CLASS 53: ONE VASE OF CACTUS/SEMI-CACTUS DAHLIAS, SMALL

Any variety or varieties.

1st Prize £15. 2nd Prize £10. 3rd Prize £5.

CLASS 54: ONE VASE OF POM POM DAHLIAS

Three different classifications.

1st Prize £15. 2nd Prize £10. 3rd Prize £5.

CLASS 55: ONE VASE OF COLLARETTE DAHLIAS

Three blooms per vase.

1st Prize £15. 2nd Prize £10. 3rd Prize £5.

CLASS 56: THREE VASES OF DAHLIAS

Three blooms per vase. Any variety or varieties.

1st Prize £20. 2nd Prize £15. 3rd Prize £10.

CLASS 57: FIVE VASES OF DAHLIAS

Three blooms per vase. Any variety or varieties.

1st Prize £30. 2nd Prize £20. 3rd Prize £10.

CLASS 58: THREE VASES OF SINGLE BLOOM DAHLIA

Three different classifications.

1st Prize £15. 2nd Prize £10. 3rd Prize £5.

CLASS 59: FIVE VASES OF CHRYSANTHEMUMS

Three blooms per vase. No less than 3 cultivars.

1st Prize £30. 2nd Prize £20. 3rd Prize £15.

CLASS 60: THREE VASES OF CHRYSANTHEMUMS

Three blooms per vase. Three different cultivars.

1st Prize £20. 2nd Prize £15. 3rd Prize £10.

CLASS 61: ONE VASE OF MEDIUM INCURVE CHRYSANTHEMUMS

Three blooms per vase.

1st Prize £15. 2nd Prize £10. 3rd Prize £5.

**CLASS 62: ONE VASE OF LARGE INTERMEDIATE
CHRYSANTHEMUMS**

Three blooms per vase.

1st Prize £15. 2nd Prize £10. 3rd Prize £5.

**CLASS 63: ONE VASE OF MEDIUM INTERMEDIATE
CHRYSANTHEMUMS**

Three blooms per vase.

1st Prize £15. 2nd Prize £10. 3rd Prize £5.

CLASS 64: ONE VASE OF LARGE REFLEX CHRYSANTHEMUMS

Decoration allowed.

1st Prize £15. 2nd Prize £10. 3rd Prize £5.

CLASS 65: VASE OF THREE BLOOMS OF CHRYSANTHEMUMS

1 incurve. 1 intermediate. 1 reflex.

1st Prize £15. 2nd Prize £10. 3rd Prize £5.

CLASS 66: ONE VASE OF MEDIUM REFLEX CHRYSANTHEMUMS

Three blooms per vase.

1st Prize. 15. 2nd Prize £10. 3rd Prize £5.

**CLASS 67: ONE VASE OF EXHIBITION SPRAY
CHRYSANTHEMUMS**

Five stems per vase. One distinct cultivar.
1st Prize £15. 2nd Prize £10. 3rd Prize £5.

CLASS 68: ONE VASE OF FLOWERS FOR FRONTAL EFFECT

Decoration allowed

1st Prize £15. 2nd Prize £10. 3rd Prize £5.

CLASS 69: ONE VASE OF FIVE BLOOMS OF CHRYSANTHEMUMS

Any variety or varieties.

1st Prize £20. 2nd Prize £15. 3rd Prize £10.

CLASS 70: ONE POT PLANT FLOWERING

Maximum 4 ltr pot.

1st Prize £15. 2nd Prize £10. 3rd Prize £5.

CLASS 71: ONE POT PLANT FOLIAGE

Maximum 4 ltr pot.

1st Prize £15. 2nd Prize £10. 3rd Prize £5.

CLASS 72: POT PLANT OF CHILLIES

Maximum 3 chillies per pot. Maximum 5 ltr pot

1st Prize £15. 2nd Prize £10. 3rd Prize £5.

CLASS 73: ONE BONSAI

1st Prize £15. 2nd Prize £10. 3rd Prize £5.



The North East Horticultural Society Championship Show Entry Form
(Entries on Show day allowed providing space available).

Posted entries to: Alison Keeler, 10 Tyne Avenue, Leadgate, Consett,
 County Durham, DH8 6HB

For queries: Telephone: 07951158719 (telephone entries will not be
 accepted) or e-mail: joesmob@hotmail.com

Please enter me in the following classes (tick the box for the class(es) you wish to enter):

1	2	3	4	5	6	7	8	9	10	11	12	13	14	15	16	17	18	19	20
<input type="checkbox"/>	<input type="checkbox"/>	<input type="checkbox"/>	<input type="checkbox"/>	<input type="checkbox"/>	<input type="checkbox"/>	<input type="checkbox"/>	<input type="checkbox"/>	<input type="checkbox"/>	<input type="checkbox"/>	<input type="checkbox"/>	<input type="checkbox"/>	<input type="checkbox"/>	<input type="checkbox"/>	<input type="checkbox"/>	<input type="checkbox"/>	<input type="checkbox"/>	<input type="checkbox"/>	<input type="checkbox"/>	<input type="checkbox"/>
21	22	23	24	25	26	27	28	29	30	31	32	33	34	35	36	37	38	39	40
<input type="checkbox"/>	<input type="checkbox"/>	<input type="checkbox"/>	<input type="checkbox"/>	<input type="checkbox"/>	<input type="checkbox"/>	<input type="checkbox"/>	<input type="checkbox"/>	<input type="checkbox"/>	<input type="checkbox"/>	<input type="checkbox"/>	<input type="checkbox"/>	<input type="checkbox"/>	<input type="checkbox"/>	<input type="checkbox"/>	<input type="checkbox"/>	<input type="checkbox"/>	<input type="checkbox"/>	<input type="checkbox"/>	<input type="checkbox"/>
41	42	43	44	45	46	47	48	49	50	51	52	53	54	55	56	57	58	59	60
<input type="checkbox"/>	<input type="checkbox"/>	<input type="checkbox"/>	<input type="checkbox"/>	<input type="checkbox"/>	<input type="checkbox"/>	<input type="checkbox"/>	<input type="checkbox"/>	<input type="checkbox"/>	<input type="checkbox"/>	<input type="checkbox"/>	<input type="checkbox"/>	<input type="checkbox"/>	<input type="checkbox"/>	<input type="checkbox"/>	<input type="checkbox"/>	<input type="checkbox"/>	<input type="checkbox"/>	<input type="checkbox"/>	<input type="checkbox"/>
61	62	63	64	65	66	67	68	69	70	71	72	73	74	75	76	77	78	79	80
<input type="checkbox"/>	<input type="checkbox"/>	<input type="checkbox"/>	<input type="checkbox"/>	<input type="checkbox"/>	<input type="checkbox"/>	<input type="checkbox"/>	<input type="checkbox"/>	<input type="checkbox"/>	<input type="checkbox"/>	<input type="checkbox"/>	<input type="checkbox"/>	<input type="checkbox"/>	<input type="checkbox"/>	<input type="checkbox"/>	<input type="checkbox"/>	<input type="checkbox"/>	<input type="checkbox"/>	<input type="checkbox"/>	<input type="checkbox"/>

Entry fees for the North East Horticultural Championships are as follows: A single entry has a fee of £5. Multiple entries will cost £10 (classes 1-6) or £10 (classes 7-80). Entry is free of charge for North East Horticultural Society members for classes 7-80. Entries are restricted to one per person per class. Prize will be posted. All entries must be accompanied with entry fee.

Entry fees total: £

(Cheques to be made payable to The North East Horticultural Society)

Name:

Address:

Postcode:

Telephone:

ALL EXHIBITORS MUST PROVIDE THEIR FULL NAME AND ADDRESS

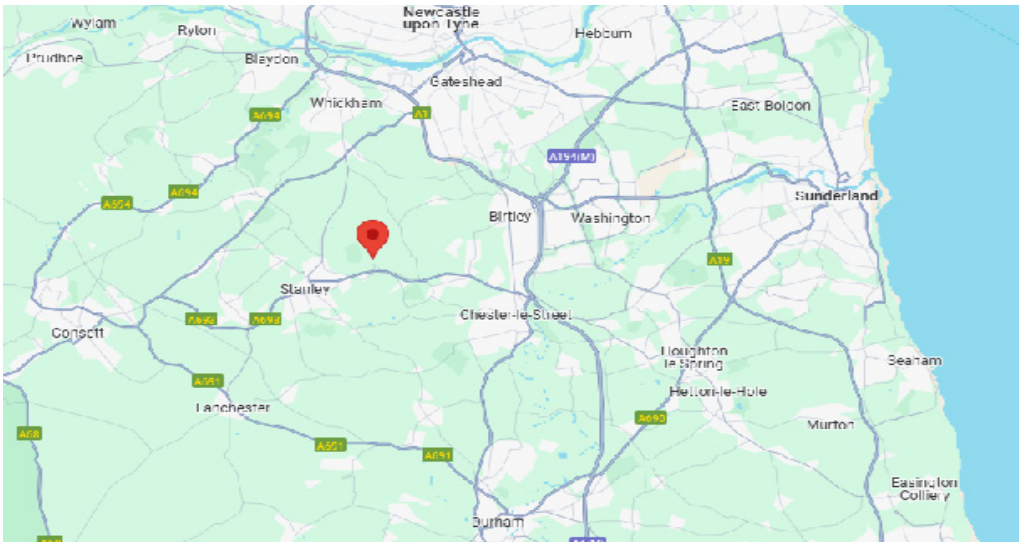
Getting here

Beamish Museum
Beamish
County Durham
DH9 0RG

From the North and South – Follow the A1M to Junction 63 (Chester-le-Street exit), then the A693 towards Stanley for 4 miles, following the signs.

From the West – Take the A68 to Castleside, near Consett, and follow the Beamish Museum signs along the A692 and A693 via Stanley.

Sat-nav users – our postcode is DH9 0RG.





Beamish Museum

Autumn and Winter

Events 2026

Atchin-Tan: Celebrating Gypsy, Romany, Traveller History –
12th & 13th September

Georgian Gathering – 19th & 20th September

Classic Cars in the 1950s – 26th September

Classic Car Day by NECPWA – 27th September

Harvest Celebrations 3rd & 4th October

October Half Term – 24th October to 1st November

Remembrance Sunday - 8th November

Christmas Daytimes – 21st November to 24th December

For more information, including events and opening times, visit
www.beamish.org.uk

Beamish Cup

The Beamish Cup is awarded to area teams of Beamish staff and volunteers. It's very competitive and teams spend all year preparing their items to enter. Keep an eye out on our social media channels for updates, and to find out who the Beamish Cup Winner 2026 will be. They're scored using the rules below:

Every entry - 1 point (note: maximum of 3 entries per person per class).

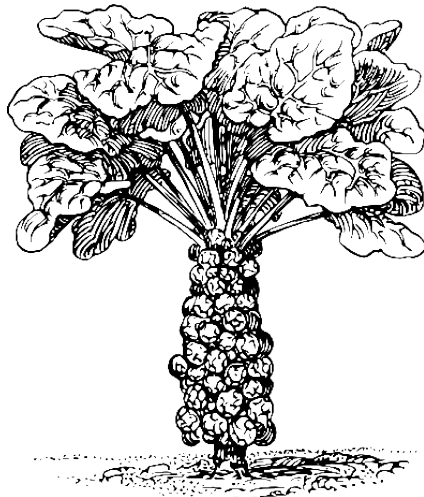
1st Prize - 6 points

2nd Prize - 4 points

3rd Prize - 2 points

Highly Commended - 1 point

The winning team receives the Beamish Tony Jobling Cup.



Sunday, 6th September

Food & Beverage

Class 56: Victoria Sandwich Cake (jam filling, no cream)

Class 57: Corned Beef Plate Pie

Class 58: Currant Slice

Class 59: Egg Custard Tart

Class 60: Four Cheese Scones

Class 61: Ginger Cake (traybakes)

Class 62: Four Shortbread Biscuits

Class 63: Handmade White Loaf (not machine)

Class 64: Stottie

Class 65: Four Teacakes

Class 66: One Fruit Jam

Class 67: Orange Marmalade

Class 68: Onion Chutney

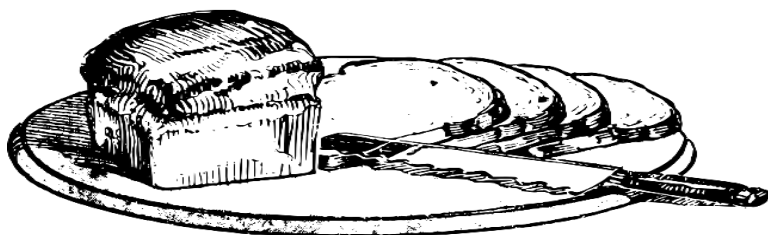
Class 69: Sloe Gin (Adults only)

Class 70: Homemade Lemonade

Class 71: 3 Hen Eggs – White

Class 72: 3 Hen Eggs – Brown

Class 73: A Baking Disaster



Beamish Challenge: Youth Section

Entries accepted between 10am and 11:30am. Judging to be completed by 1pm on both days. Entries to be collected by 5pm each day. Each below class is available within the following categories: 6 years and under, 7-10 years and 11-16 years.

Saturday, 5th September

Floral Arrangement

Class 42: Miniature Garden

Class 43: Mixed Arrangement of any Garden Flowers and Foliage

Arts & Crafts

Class 44: Decorated Pebble

Class 45: Peg Doll

Class 46: Decorated Egg

Class 47: Clippy/Progy Mat (no bigger than 40cm x 40cm)

Class 48: Photograph 'Beamish Through Your Eyes' (no bigger than A4, unframed)

Class 49: Drawing Inspired by Beamish (no bigger than A4, unframed)

Class 50: Any Felted Item

Class 51: Poem Inspired by Beamish (with additional prize for best handwriting)

Class 52: Any Crocheted or Knitted Item

Sunday, 6th September

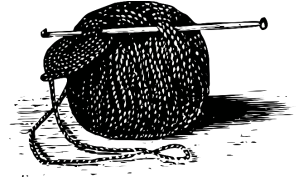
Food & Beverage

Class 53: Best Decorated Cupcake

Class 54: Best Decorated Gingerbread Person

Class 55: Cakes That Look Like Animals

Arts & Crafts



Class 20: Decorated Egg

Class 21: Hand-Knitted Toy

Class 22: Hand-Knitted Garment

Class 23: Crochet Toy

Class 24: Crochet Garment

Class 25: Clippy/Proggy Mat

Class 26: Hooky Mat

Class 27: Patchwork Cover/Blanket

Class 28: Quilted Cover/Blanket

Class 29: Handworked Cross-Stitch (unframed, no bigger than 12x12 inches)

Class 30: Handworked Tapestry (unframed, no bigger than 12x12 inches)

Class 31: Handworked Embroidery (unframed, no bigger than 12x12 inches)

Class 32: Handworked Any Felted Item (unframed, no bigger than 12x12 inches)

Class 33: Drawing Inspired by Beamish

(Any medium, no bigger than A4 unframed)

Class 34: Painting Inspired by Beamish

(Any medium, no bigger than A4 unframed)

Class 35: Photograph of any Beamish Animal(s)

(No bigger than A4 unframed)

Class 36: Homemade Postcard

Class 37: Peg Doll in the Image of a Beamish Character

Class 38: Small Piece of Handmade Woodwork

Class 39: Hand-Carved Wood

Class 40: Any Handstitched Leatherwork

Class 41: Any Handworked Clay Item

Saturday, 5th September

Homegrown Vegetables

Class 1: Heaviest Marrow

Class 2: Longest Bean

Class 3: Three Potatoes

Class 4: 2 Leeks (As pulled, cleaned, tops on)

Class 5: 3 Beetroots (As pulled, cleaned, tops on)

Class 6: 3 Onions (As pulled, cleaned, tops on)

Class 7: 3 Carrots (As pulled, cleaned, tops on)

Class 8: 3 Apples (with stalks and leaves)

Class 9: 3 Pears (with stalks and leaves)

Class 10: 3 Small Tomatoes (with stalks)

Class 11: 3 Large Tomatoes (with stalks)

Class 12: Miniature Garden

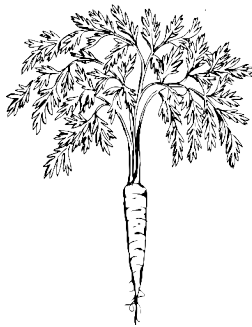
Class 13: Any Mishapen Vegetable

Class 14: Tray of Mixed Vegetables
(judged on variety and quality)

Class 15: Tray of Seasonal Fruit

Children's Competition (under 16)

Class 16: Animal made from Vegetables



Floral Arrangements

Class 17: Mixed Arrangement of any Garden Flowers and Foliage

Class 18: Three Best Sweet Peas in a Jar

Class 19: Three Flowers of a Kind

The Beamish Challenge

Saturday, 5th and Sunday, 6th September 2026

Join in with our annual Beamish Challenge 2026.

Entry is free* and there are certificates and rosettes up for grabs for 1st, 2nd and 3rd place.

Entries to be received at the show marquee by 11am on both days (volunteers and staff by 10am). Judging will start at 11.15am and will be completed by 1pm both days.

We kindly ask all visitor entries to be collected by 5pm each day. Please note it is requested no more than 3 entries per person, per class.



Everyone is welcome.



Good luck!

*Admission fee to Beamish is required, but there is no extra charge to enter The Beamish Challenge. Entering The Beamish Challenge and enjoying the North East Horticultural Society Show is free to Beamish Unlimited Pass holders and Friends of Beamish members.

