

MOTORSPORT ARBORICULTURE AND FORESTRY  
VETERINARY NURSING SPORT OUTREACH  
PUBLIC SERVICES LAND AND WILDLIFE  
AGRICULTURE ANIMAL MANAGEMENT  
EQUINE HORTICULTURE FLORISTRY  
ENGINEERING FOUNDATION LEARNING



Click here

Check out our Open Events and register today,  
visit [askham-bryan.ac.uk/open-days](https://askham-bryan.ac.uk/open-days)



75 YEARS OF EXCELLENCE IN LAND-BASED EDUCATION

# Make your learning matter



Askham Bryan College, Askham Bryan, York YO23 3FR

T: 01904 772277 E: [enquiries@askham-bryan.ac.uk](mailto:enquiries@askham-bryan.ac.uk)

[www.askham-bryan.ac.uk](https://www.askham-bryan.ac.uk)



**Further Education**  
INFORMATION GUIDE

# Open Events

We offer several Open Events throughout the year. Open Events are a great opportunity to tour our grounds and facilities, meet our staff and learn about our courses.

We also have an Information Evening when tutors, lecturers and support staff from accommodation and transport are available to answer your questions.

Information about all our Open Events can be found at [askham-bryan.ac.uk](http://askham-bryan.ac.uk).

## A little bit of information you should know

We have tried to ensure that all of the information provided in this guide is accurate and as up-to-date as possible. However, sometimes details can change. Where there are differences between the contents of this guide and our website, the contents of the website take precedence. Please always check the website before you apply.

Please note, all photographs are for illustrative purposes only.

# Contents

- |                                     |   |
|-------------------------------------|---|
| 4 Why Choose Us?                    | 18 Transport to College                         |
| 6 Where to Study                    | 20 Living-in with Us                            |
| 8 Our Study Programmes              | 23 Apply to Us                                  |
| 10 Our Further Education Programmes | 24 Our Degree Programmes                        |
| 12 Entry Requirements               | 25 Part Time, Short Courses and Skills Training |
| 14 Apprenticeships                  | 26 Bursaries and Loans                          |
| 16 Campus Life                      | 27 Next Steps                                   |





# Askham Bryan College has a long and proud history.

This year, the college is delighted to be celebrating 75 years of providing specialist land-based education and training to students. During the last 75 years, the college has developed a regional and national reputation and significantly grown its student and staff community and course offer.

From welcoming its first cohort of 40 residential students in 1948, the college now educates around 4,000 students and over 600 apprentices a year at sites across Northern England.

Over the decades, its facilities and estate have expanded at its main campus in York with additional sites located at Middlesbrough, Saltaire, Newcastle Gateshead and Wakefield.

Graded by Ofsted as 'good' for teaching and 'outstanding' for its residential care and provision, the college prides itself on providing a high-quality industry relevant curriculum and making all of its students feel welcome.

It is vital that the curriculum keeps pace with industry developments and the new facilities are equipping students with new higher level technical skills that fill skills gaps, increase productivity, and support entrepreneurship and job creation.

The facilities have been hailed for taking teaching and learning to a new level ensuring that the next generation of talent have the high-tech skills to meet the current and future challenges for the economy and environment.

The £1 million Digital Skills Academy has the latest equipment to develop students' digital capabilities and has been made possible by the Yorkshire and Humber Institute of Technology, which Askham Bryan College is part of. The college has also opened a £1.7 million precision livestock facility funded by the Yorkshire and Humber Institute of Technology.

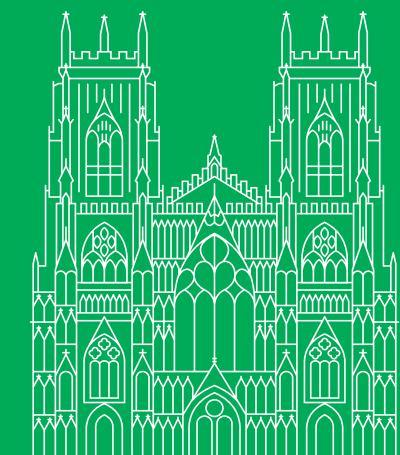
As the college celebrates its remarkable journey, it remains committed to engaging students in an industry relevant curriculum that enhances their skills and career prospects and meets employers' needs.





# Where to Study

Askham Bryan College has two main campuses at York and Middlesbrough. These campuses are complemented by specialist study facilities across the North.



## **Y** York

The main campus, situated just outside York, provides students with the full suite of programmes connected to land based and outdoor-related learning. The College is equipped with industry-matched facilities and set in a vast estate which provides students with the environment to develop their subject skills and experience. Accommodation is available on site.

**Askham Bryan, York YO23 3FR**  
T: 01904 772277

## **M** Middlesbrough

Our Middlesbrough campus, located at Stewart Park, comprises 120 acres of parkland, with a mature woodland, an arboretum and two lakes which provide a habitat for a diverse range of species. The park is also home to a range of farm animals including fallow deer, llamas and goats.

**Stewart Park, Middlesbrough, TS7 8AR**  
T: 01642 327998

## **G** Gateshead

A great city location for our Veterinary Nursing programme.

**Cameron House – West Wing**  
**Metrocentre, Gateshead, NE11 9XW**  
T: 01914 911275

## **S** Saltaire

Located in the UNESCO World Heritage Site of Saltaire, a selection of our Animal Management study programmes is delivered at Shipley College. The facility is easily accessible by bus or train from Leeds, Bradford, Ilkley, Keighley, Bingley and Skipton.

**The Mill Building, Victoria Road, Saltaire,**  
**Shipley BD18 3LA**  
T: 01274 327258

## **W** Wakefield

This newly refurbished location in the city centre is just a short walk from the bus and train station. Students divide time between this campus and the Animal Management Centre at York.

**Bullring House, 23 Northgate,**  
**Wakefield WF1 3BJ**  
T: 01904 772277

Go to page 18 for information about transport links to our campuses.

# Our Study Programmes

Discover T-Level Qualifications too!



Click here

We take a proactive approach to our study programmes, with a focus on being 'job ready'. When you take that first step to embark on your future career, we strive to prepare you to understand work values and equip you with the necessary skills required to enter your desired profession.

## Main qualification

Your main qualification will be a mixture of practical 'hands-on' work and classroom-based theory sessions which will normally be assessed by a mix of assignments, practical assessments and exams.

## Enrichment... but with a business twist!

Enjoy your favourite enrichment activities and also identify transferable skills; 'leadership', 'dedication' and 'reliability'. You'll develop the mind-set to apply these elements when securing that future career.

## Student appraisal and employability

Appraisals happen every six to eight weeks and keep you on track with achievements, progress, attendance and punctuality. Weekly employability sessions prepare you for work placement, progression into employment, writing a bio or blog and building a CV.



## Work placement

All courses have work placement hours as part of their study programme and the number of hours varies depending on the level of study. Specifically, students studying level 3 land based technical subjects are expected to complete a work placement (150 hours) as part of the main qualification in their first year and then an industry placement (min 315 hours) in their second year. Work Placement Coordinators help find appropriate placements whilst monitoring progress and achievements. Our 'Employability Coaches' are also available to help; you'll upload photographs, blogs, videos and develop values recognised by employers such as discipline, mutual respect and resilience... a fantastic start for CVs!

## English and Maths

English and Maths knowledge underpins all career pathways. These basic skills are essential for academic progression and securing employment. As such, you may need to continue studying them alongside your main programme to improve existing grades.

## Independent study

Our curriculum teams will help you understand the best way to learn by working on a course-specific project studied independently or collaboratively.



# Our Programmes

Individual full time Course Guides with information about the course study are available to pick up and also online.

There may be times when the College needs to discontinue a course or decide not to provide a course or to merge or combine the course with other courses of study, dependent on numbers.

Course Titles	Y	M	S	W	G
<b>Agriculture</b> Level 1: Agriculture Level 2: Agriculture Level 2: Land Based Engineering Level 3: Agriculture – Livestock pathway Level 3: Agriculture – Arable pathway T-Level: Agriculture – Livestock pathway T Level: Agriculture – Crop Production pathway	Y Y Y Y Y Y Y				
<b>Animal Management</b> Level 1: Animal Care Level 2: Animal Care T-Level Animal Care and Management - General Animal Pathway T-Level Animal Care and Management - Companion Pathway T-Level Animal Care and Management - Science Pathway Level 3: Animal Management Level 3: Animal Management – Conservation Level 3: Animal Management – Companion Animals Level 3: Zoo Collections Level 3: Animal Management – Collection and Conservation Level 3: Practical Animal Care Skills	Y Y Y Y Y Y Y	M M M	S S S	W W W	
<b>Arboriculture and Forestry</b> Level 2: Forestry and Arboriculture Level 3: Forestry and Arboriculture T Level: Trees and Woodland (Arboriculture)	Y Y Y				
<b>Equine</b> Level 1: Horse Care Level 2: Equine Care Level 3: Equine Management Level 3: Equine Sport	Y Y Y Y	M M M			

KEY: Y = York M = Middlesbrough S = Saltaire W = Wakefield G = Gateshead

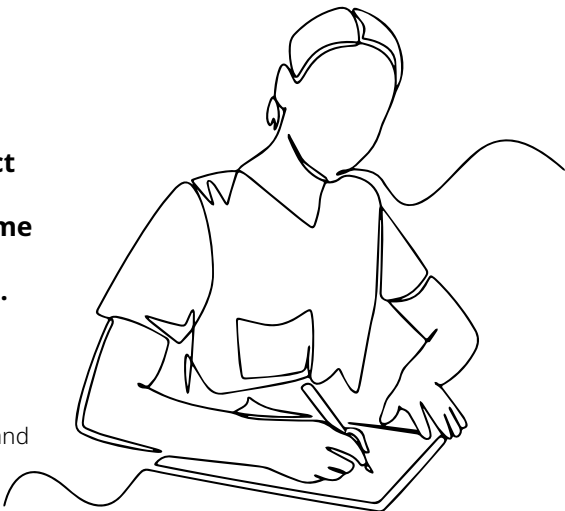
Course Titles	Y	M	S	W	G
<b>Floristry</b> Level 2: Floristry Level 3: Floristry	Y Y	M			
<b>Foundation Learning</b> Entry Level 1 – 3.5 (Diploma): City and Guilds - Skills for Working Life Level 1: Land Based Studies – Agriculture, Animal Care, Equine, Horticulture Level 2 Stepping Stone (Extended Certificate): Animal Care or Land Based Studies Level 2 (Diploma): Animal Care or Land Based Studies	Y Y Y Y	M M M*			
<b>Horticulture</b> Level 1: Horticulture Level 2: Horticulture Level 3: Horticulture T Level: Ornamental and Environmental Horticulture and Landscaping	Y Y Y Y	M M			
<b>Land and Wildlife</b> Level 3: Land and Wildlife – Gamekeeping	Y				
<b>Motorsport</b> Level 1: Introduction to Transport Maintenance Level 2: Motor Vehicle Technology and Motorsport Level 3: Motorsport Engineering	Y Y Y				
<b>Public Services</b> Level 2: Public Services Level 3: Uniformed Public Services Level 3: Policing	Y Y Y				
<b>Sport</b> Level 2: Sport Level 3: Sport Level 3: Outdoor Adventure Sport	Y Y Y				
<b>Veterinary Nursing</b> Level 2: Certificate in Animal Nursing (Blended Learning) Level 2/3: Introduction to Animal Nursing and Welfare Level 3: Veterinary Nursing	Y Y				G G+

\*Animal Care only  
+ Once a month attend

# Entry Requirements

This is a general guide of entry requirements. Please check your chosen course for any subject-specific requirements. Normally we would expect you to move to the level above the qualification you have just achieved. Some courses require particular skills whilst others require grades and qualifications.

At your interview, we confirm your suitability for a course. We can assess your English and Maths skills to ensure you are placed on the right level class. If you're a mature student, we take your professional and educational experience into consideration.



### Entry Level 2 and 3 -

Basic level programmes that build a foundation of confidence, knowledge and skills.

### Level 1 Study Programmes -

Step up from basic knowledge and a platform to learn skills in a particular work sector.

### Level 2 Study Programmes -

Equivalent to GCSE Grades 4–9 or A–C, developing knowledge in a particular work sector.

Technical and non-technical qualifications

### Level 3 Study Programmes -

Equivalent to A-levels with in-depth knowledge, skills and understanding.

Qualification type:	Entry criteria:
Entry Level 2 and 3	No formal qualifications, but you need Entry Level 2 before progressing to Entry Level 3.
Level 1	Entry Level 3 or equivalent qualifications or four GCSEs at Grade 1 – 2.
Level 2	Four GCSEs 3-9 to include two from English, Maths or Science, with at least a grade 2 in the remaining subject. Alternatively, a suitable Level 1 vocational qualification with English and Maths at Level 1.
T-Levels	Four GCSEs 4-9 including English, Maths and a Science
Level 3	Four GCSEs at grade 4-9 including 2 from English, Maths or Science with at least a grade 3 in the remaining subject. Alternatively, a suitable Level 2 vocational qualification (Merit or above) with English and Maths at Level 2.



New £1m Digital Skill Academy facility

### Courses with additional requirements...

#### Level 2/3 Introduction to Animal Nursing and Welfare

→ Four GCSEs at Grade 4 or above (old GCSE grading C or above) to include English Language, Maths or Science, plus two weeks work experience with suitable references in any animal-related placement.

#### Level 3 Veterinary Nursing

→ Five GCSEs to include English Language, Maths and Science Grade 4 or above (old GCSE grading C or above). Students must have secured employment within a veterinary practice or have been offered an apprenticeship position.

#### Level 2 Motorsport

→ Four GCSEs grade 4-9, including English and Maths grade 4 or above required

#### Level 2 Land-Based Engineering

→ Four GCSEs 4-9, including English and Maths at grade 4 or above required

### What if I don't get the grades?

Don't worry! We can often transfer your application to a more suitable course, providing we have availability.

If you prefer a hands-on way of learning, combining practical skills with theoretical knowledge, you may find technical courses more relevant, compared to classroom/book-based learning on an A-Level course across a number of subjects. If you choose a technical course you'll only study one specialist subject area linked to a specific industry and usually require you to gain work experience.

Non-technical qualifications still focus on industry related areas, but has more emphasis on building the wider skills such as communication, decision-making, team-work, leadership to name but a few.





Learn more  
about our  
Apprenticeship  
programmes



# Apprenticeships

- General Farm Worker Level 2
- Livestock unit technician Level 3
- Arborist Level 2
- Crop Technician Level 3
- Countryside Worker Level 2
- Equine Groom Level 2
- Senior Equine Groom Level 3
- Golf Greenkeeper Level 2
- Advanced Golf Greenkeeper Level 3
- Horticulture or Landscape Operative Level 2
- Landscape or Horticulture Supervisor Level 3
- Land-Based Service Engineer Level 2
- Land-Based Service Engineering Technician Level 3
- Sports Turf Operative Level 2
- Veterinary Nurse Level 3

Apprenticeships are work-based programmes. This is a combination of training on the job and formal study at the College. Students will attend College either on day release or in study blocks. At least 20% of an apprentice's time on programme is spent in training. This includes time at College and training provided by their employer.

The majority of your learning will take place at your workplace. We cannot provide placements, but we may be able to help guide you in your search for a suitable job. As a starting point, try searching on [apprenticeships.gov.uk](https://www.apprenticeships.gov.uk).

Prior to beginning an Apprenticeship you must be employed in a suitable job role, which aligns with the content of your preferred course of study.

Apprenticeships are also 'employer led' and can only successfully be delivered in close collaboration with a supportive employer committed to your development. On receipt of your expression of interest, the College will schedule an interview with you and your employer.

## Entry Requirements

To be eligible for an apprenticeship you need to be in a suitable job role and in paid employment.

### Level 2 Apprenticeship

- Level 1 Maths and English equivalent to GCSE grade 2 (old GCSE grade E) or above, plus suitable and relevant employment. Students will be expected to work towards Level 2 Maths and English where this has not been achieved.

### Level 3 Apprenticeship

- Applicants should have considerable work experience plus suitable employment with an appropriate level of responsibility. They must be capable of achieving or have achieved Level 2 in Maths and English.

There may be additional requirements on specific apprenticeship programmes.

## Programme Fees

Programme fees would be met by the employer or the government. There may be other incurred costs such as accommodation for any block weeks or transport required for college attendance.

## Information for Employers

If you are an employer, please refer to our website for further information with regards to running apprenticeship programmes.





# Campus Life

**Campus life is what happens when you are outside the classroom, whether you're living in our accommodation or off campus. We understand that this is just as important to you as your studies.**

There are many opportunities where you can meet new people, make new friends and take part in activities. Student Union events are held throughout the year and include icebreakers, course trips, Fresher's events, our annual Spring Ball and careers events where you meet employers. You could join chess club or have a go in gardening club.

As a residential student you can attend our cinema nights, bar olympics and night trips. Anyone can join our football, netball or rugby teams.

At Askham Bryan College, there is something for everyone who studies here.

## Equality, Diversity and Inclusion

Equality, diversity and inclusion are at the heart of our College's vision for our staff and students. We understand the importance of fairness and value the contribution everyone can make here.

## Inclusive Learning

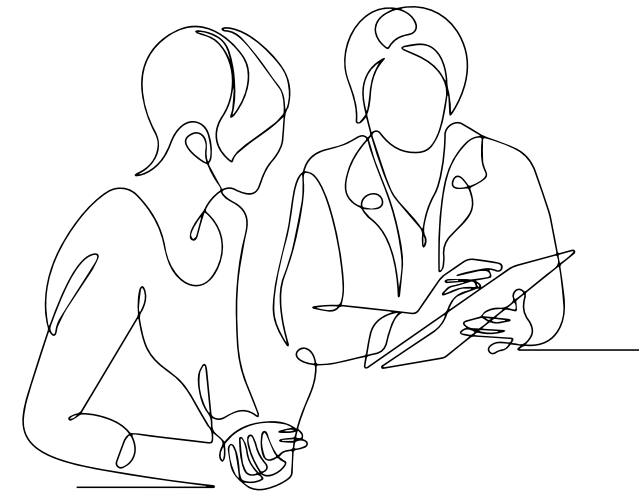
It is our job to make reasonable adjustments or provide services such as a dedicated support worker or additional learning materials that suit your needs. Depending on your circumstances, we take careful consideration and appropriate measures if you have an Education, Health and Care Plan.

## Student Services

Our Student Services team's top priorities are the health, safety and welfare of our students. The team is available to offer advice and support for matters from well-being to finance. A 24-hour helpline is also available whenever needed.

## Work Placement Coordinators

We have an experienced team of work placement coordinators. They work with our employer contacts to secure valuable professional experience opportunities for meaningful placements – no tea making here!

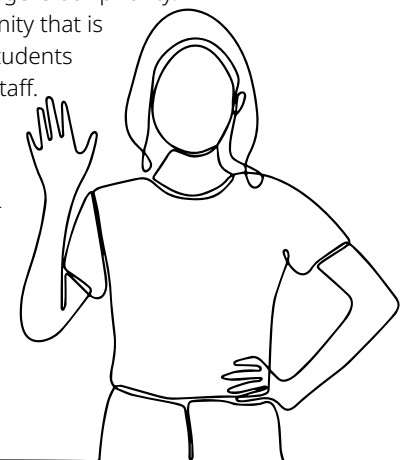


## Welcome to student life at Askham Bryan College!

The Student Union is the hub to what's happening on campus. This includes social events and activities. We also represent the student voice here at College and invite all students, from all our locations, to take part in everything we offer. Your student experience is very important to us and supporting you throughout your journey at Askham Bryan College is our priority.

The SU is a community that is led and driven by students and supported by staff.

Drop by and see us in the SU office and learn more about making the most of your time here.





# Transport to College

There are major transport links to the York campus on local bus routes. Full-time students can ask about travel arrangements from various designated pick-up points. Contact our transport office to talk through options or visit our website for the latest routes.

\* Please note route information relates to 2023–24 academic year and may be subject to change.

Find more about our transport here



Attending our campuses at Middlesbrough, Saltaire or Wakefield?

Contact our **Transport Team** to find out the best options and support for you.

E: [transport@askham-bryan.ac.uk](mailto:transport@askham-bryan.ac.uk)  
T: 01904 772225

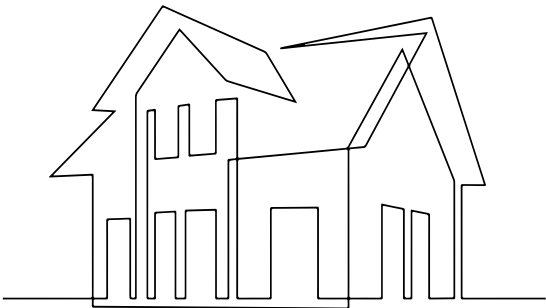


# Living-in with Us

You don't have to wait until University to experience living away from home...

We offer on-site accommodation at Askham Bryan College campus in York.

- We have a generous bursary scheme that could help fund your stay.
- A choice of en-suite single rooms, shared rooms and facilities.
- For under 18s, all meals are included in the accommodation package.
- We have plenty of support on site, including wardens to keep you safe and help you adjust to living away from home.
- We have a range of activities you can get involved in outside of college hours.
- The residential experience allows students from across the country to study with us.



## Living on campus will help you...

- Develop independence
- Make new friends
- Take part in a range of enriching activities

Applications for a September start in accommodations normally open by spring. Please find more information on our website.

If you still have questions, please contact the Accommodation Office:

T: 01904 772246

E: accommodation@askham-bryan.ac.uk



Click here



Learn more at [askham-bryan.ac.uk](https://askham-bryan.ac.uk)

**Ofsted**  
Outstanding  
Provider

Students value the increased independence that they get from learning to live away from home.

Ofsted care standards inspection 2023



Learn more at [askham-bryan.ac.uk](https://askham-bryan.ac.uk)





# Apply to Us

Visit us at one of our Open Events or look out for us at one of your school's career events. Speak with your parents, guardian or careers adviser about the courses you're interested in and find the 'best fit' for your future aspirations.

1

## Apply

Complete the application form online at [askham-bryan.ac.uk](http://askham-bryan.ac.uk). You can apply for a course at any time during the year, but it is best to complete your application as early as possible to be assured of a place on your chosen course.

Click here



to apply

2

## Interview

Once we receive your application, you will then be sent an interview date and time with the relevant course manager via text message – please give us a call if you need to rearrange. Don't be nervous, it's an opportunity for you to tell us more about yourself and ask any questions you might have.

3

## Offer

If you have had a successful interview, you will receive a course offer detailing the qualifications and grades you need to secure a place on the course. Please confirm with us whether you accept the offer or not.

4

## Get Organised

This is the time you need to be sorting transport, finance and booking accommodation. Don't leave this too late or you could miss out!

5

## Results and Enrolment

The majority of enrolment is completed online. You will be required to provide evidence of your results or relevant certificates. If you haven't met all of our entry requirements, you should still contact us and we will try and offer you a place on a suitable alternative course.





# Our Degree Programmes

 **University Centre**  
ASKHAM BRYAN YORK

## University Centre Askham Bryan offers university-level degree programmes.

A Higher Education qualification offers greater opportunities to progress onto your chosen career and access to new and exciting experiences across a wide range of professions.

Information about Taster Days, Information Evenings and Saturday Open Events can be found at [askham-bryan.ac.uk](http://askham-bryan.ac.uk).

Our Higher Education degree programmes are awarded and validated by **Askham Bryan College** as well as by **Harper Adams University** ([www.harper-adams.ac.uk](http://www.harper-adams.ac.uk)), **Royal Agricultural University** ([www.rau.ac.uk](http://www.rau.ac.uk))\*



For more  
information  
about  
our  
degrees



Click here

\*The College reserves the right to change validating partners

# Part Time, Short Courses and Skills Training

## Invest in you, your staff or your business

Our part time, short courses and skills training give you an opportunity to enhance your skills, improve your career prospects, boost your earning potential and develop a leisure interest that can eventually turn into a new career.

## Examples of the types of course areas available:

- All-Terrain Vehicles
- Dog Grooming
- Horticulture
- Pesticides spraying
- BHS Equine
- Floristry
- Landscaping
- Transport of Livestock
- Chainsaw Use
- Garden Design
- Navigation

For further details on courses and how to book click the link opposite, or call us on the following number:

Askham Bryan College  
T: 01904 772211



Click here



# Bursaries and Loans

## Further Education Programmes\*

There are no course fees if you are a full-time student from the UK or EU aged 16–18 on 31 August of the year you start your course.

## Age 19+

Advanced Learner Loans are available for learners aged 19+ for Level 3 and above courses. Even if you already hold a similar qualification, such as A-Levels, you can still apply for your first loan. See [sfengland.slc.co.uk](https://www.sfc.gov.uk), or for further guidance visit: [gov.uk/advanced-learner-loan](https://www.gov.uk/advanced-learner-loan). Bursaries are also available for students aged 19+. Visit [askham-bryan.ac.uk](https://www.askham-bryan.ac.uk) for further details. These loans cover tuition fees and can be paid back once you complete the course and earning more than £21,000 a year, so there is no upfront cost. If you are aged 19+ and in receipt of benefits, please contact us at 01904 772277 for further advice on potential fees.

## Apprenticeship Programme Fees\*

Any programme fees will be met by the employer. Other costs may be incurred, such as accommodation for any block weeks or transport required for college attendance. Please check with your employer about any additional costs.

Find out more about Bursaries and Loans



\* Subject to change, based on current government guidelines.

## Financial Support

- Visit [askham-bryan.ac.uk](https://www.askham-bryan.ac.uk) to see if you qualify for the following:
- Students on Further Education courses may be eligible for a college discretionary bursary to help support them with their transport costs, equipment, compulsory trips and other course-related costs.
  - Personal Protective Equipment (PPE) Bursary
  - Residential Grants (if you'd like to live-in and need financial support)
  - Further Education Vulnerable Bursary — £1,200 per year
  - Advanced Learner Loan (Level 3, 19+ only) A bursary of up to £750 is available to students to assist with course-related costs. Students must meet the eligibility criteria and be in receipt of the advanced learner loan for course fees.
  - Childcare Funding — There is support available to support students with childcare costs; students can get up to 85% of their cost for the academic year.
  - Vulnerable Learner Bursary – This is a bursary of up to £1200 for students who meet the criteria.

## Contact us

For further information:

### Askham Bryan College

General Enquiries: 01904 772211  
Student Services and Student Finance: 01904 772277  
[askham-bryan.ac.uk](https://www.askham-bryan.ac.uk)

# Next Steps



## Meet Us

Sign up for one of our Information Evenings or Saturday Open Events to find out more about your interested subject area.



## Experience Us

Most subjects will offer taster sessions to applicants during the year. These sessions allow you to get first-hand experience of your subject.



## Apply to Us

Go to our website to complete the application form online



## Explore Your Options

Our support services are available to help you with finance, transport and accommodation.



## Learn with Us

Enrol and begin your journey with Askham Bryan College.

# Make your learning matter



Click to find out about our upcoming Open Events



Click to apply and start your journey with us